

# SAM4S



Compact POS Printer

## GIANT-100



POS Printer's New Trend  
**New Technology**  
allows Small and  
**Distinctive Design**

- 30% Smaller than Standard Receipt Printer
- Faster Speed 250mm/sec
- Multiple Interfaces :  
USB + Serial + Ethernet (3-Combo)
- Durable Ceramic Auto-Cutter
- Jam Free Design
- Stylish Cabinet in Various Colors

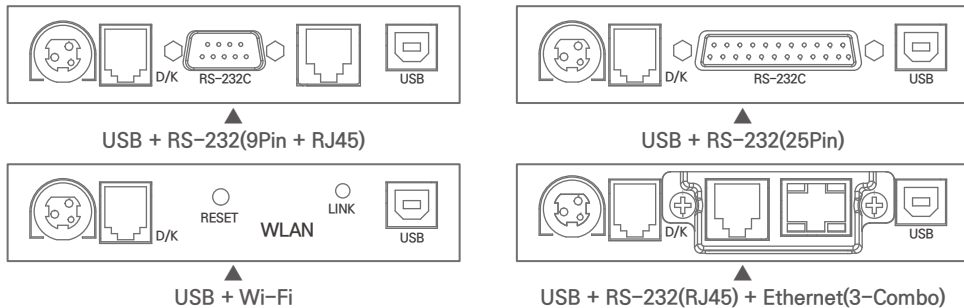
Color 



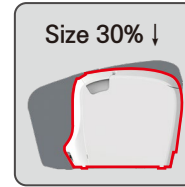
## SPECIFICATION

Model		GIANT-100
Printing Method		Thermal Line Printing
Resolution		180 DPI
Printing Speed	Mono Paper 80mm	Max. 250 mm/sec(59 Lines/sec)
	Mono Paper 58mm	150 mm/sec
	Two Color Paper	100 mm/sec
Paper	Loading	Drop-In Type
	Width	Max. 80.0 mm/58.0 mm
	Diameter	Max. Ø83.0 mm
Reliability	Mechanism(MCBF)	70,000,000 Line
	TPH	1 x 10 <sup>8</sup> Pulses/150 Km
	Auto Cutter	1,500,000 Cut(Jam Free) Only Partial Cut
Drawer Port		2 ports (+24V)
Barcode		UPC-A, UPC-E, EAN8, EAN13, Code 39, Code 93, Code 128, ITF, CODABAR, PDF417, QR Code
Driver/Utility		Windows Deiver, OPOS Driver, JPOS Driver (Linux&Mac), Cups Driver (Linux&Mac), Utility Program
SDK		iOS SDK, Android SDK
Interface		USB + RS-232(9Pin + RJ45), USB + RS-232(25Pin), USB + Wi-Fi, USB + RS-232(RJ45) + Ethernet(3-Combo)
Dimension(with Foot Rubber)		131(W) x 155(D) x 133(H) mm
Weight(Net)		0.9 Kg
Color		Black, White
Emulation		EPSON, STAR
Power Source		Rating Input AC 100~240V, 50~60Hz   Rating Output DC 24V, 2.5A
Option	Paper Near End Sensor	Yes (Only Horizontal)
	Kitchen Bell	Yes
	Wall Mount Kit	Yes
	Splash Cover	Yes
	Paper Partition(58mm)	Default

## Interface View



## Key Feature



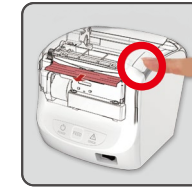
Compact Design



High Speed Printing



Ceramic Auto Cutter



Jam Free



Tool-less Design

## Option



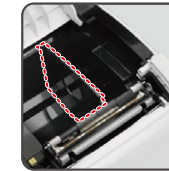
Wall Mount



Kitchen Bell



Splash Cover



Paper Partition



Black(Mat/Glossy), White

## Sub-Brand



POS Terminal



9.7" Pole Display



ETF POS Terminal



Cash Drawer



Bluetooth  
Communication  
Module

**SAM4S**

Shinheung Precision Co.,Ltd / Seoul Office

9F, Flat-C, Woolim Lion's Valley, Gasan Digital 1Ro 168, Geumcheon-gu, Seoul, 08507, Korea  
Tel. +82-2-2101-9623 | Fax. +82-2-2101-9690 | www.sam4s.com

